

Fleischmann Mtn. from the South

200-18
4/19/09

$R_1 = 0.903$

Location	P	Δp	Δe	e calc	e map	time	R1
(A) 2810	30.04	0.00	0	1500	1500'	8:35	$\frac{2900' - 1500'}{30.04' - 28.49'} = \frac{1400'}{1.55'} = 0.903$
(B) terrace field	29.98	0.06	54	1554	1550'		
(C) top 1st field	29.92	0.12	108	1608			
(D) top 2nd field	29.70	0.34	307	1807	1900' near	9:45	
(E) enter 1st road	29.67	0.37	334	1834		10:00	
(F) leave 1st road	29.49	0.55	497	1997		10:20	
(G) oak stumps	29.46	0.58	524	2024			
(H) cross 2nd road	29.26	0.78	704	2204		10:43	
(I) blaze	29.18	0.86	777	2277		10:55	
(J) ^{long} pine terrace	29.14	0.90	813	2313	2400'	11:05-11:20	
(K) reascend	29.05	0.99	894	2394		11:40 → 11:48	
(L) onto nose	28.96	1.08	975	2475			
(M) flat nose	28.92	1.12	1011	2511			
(N) leave road	28.74	1.30	1174	2674		12:04	
(O) stumps	28.60	1.44	1300	2800		12:12	
(P) on crest	28.54	1.50	1355	2855		12:16	
(Q) Summit	28.49	1.55	1400	—	2900'	12:25 AP. 1:15 LV.	

(Descent over)

Visible from up high:

From N shoulder of Fleischmann Mtn, ±20 ft below summit, a partial view reveals 3 long, low parallel bldgs, each with many Green Garage doors. On 4/21/09, en route to Gene Kelly's, these bldgs are off Kissimmee Road in Coverville, N of the Old (28).

200-19

$R_2 = 0.909$

Descent

Location	p	Δp	Δe	e calc	time	e map	R2
Ⓒ Summit	28-46	1.54	1400	—	1:15	2900	$\frac{2900 - 1500}{30.00 - 28.46} = \frac{1400'}{1.54''} = 0.909$
Ⓐ highest ash	28-60	1.40	1273	2773			
Ⓒ highest road	28-68	1.32	1199	2699	1:35		
Ⓓ stump	28-84	1.16	1054	2554			
Ⓔ BASS	28-92	1.08	982	2482			
Ⓕ on main terrace	28-98	1.02	927	2427	1:50		
Ⓖ OAK stumps	29-00	1.00	909	2409			
Ⓙ Lone pine flat	29-05	0.95	864	2364	2:04	2400'	
Ⓧ blaze	29-12	0.88	800	2300	2:17		
Ⓡ road	29-20	0.80	727	2227	2:25		
Ⓩ road juvic	29-32	0.68	618	2118	2:32		
ⒺⒻ Chestnut	29-46	0.54	491	1991	2:45		
ⒶⒹ deer stand, green ng	29-61	0.39	355	1855			
ⒷⒷ partial view	29-68	0.32	291	1791	2:58	1550'	
ⒸⒸ top of sugarbush	29-77	0.23	209	1709			
Ⓑ terrace field	29-89	0.11	100	1600	3:23 to 3:38		
Ⓐ 2810	30-00	0	—	—	3:45	1500'	

Tree Ages and Stump age estimates:

Ⓒ Oak stump ca-20y old. Logged 1990±.
 above Ⓒ ledges: Oak log $27'' = 110y$ ^{remaining} _{diam.} cut ca-20y ago; log on ground. 8" diameter core is heart-rotted away. Bark off. Estimated full age: 156y, estab. 1833 - prob. later.

Radius remaining	9 1/2"	110y
Radius full	13 1/2"	? y

? = 156y if linear growth rate

#13 2nd oak stump, 28" full stump, no heart rot, 100y. Cut ±20y ago. Established 1890±.

#42 Ⓙ e-white pine above 70 to 75' tall, 22" dbh; one 2 1/2" ^{diam.} broken branch = 20y. Grew up in the open. Self-pruning incomplete down to ground level. About 20' elev. below terrace.

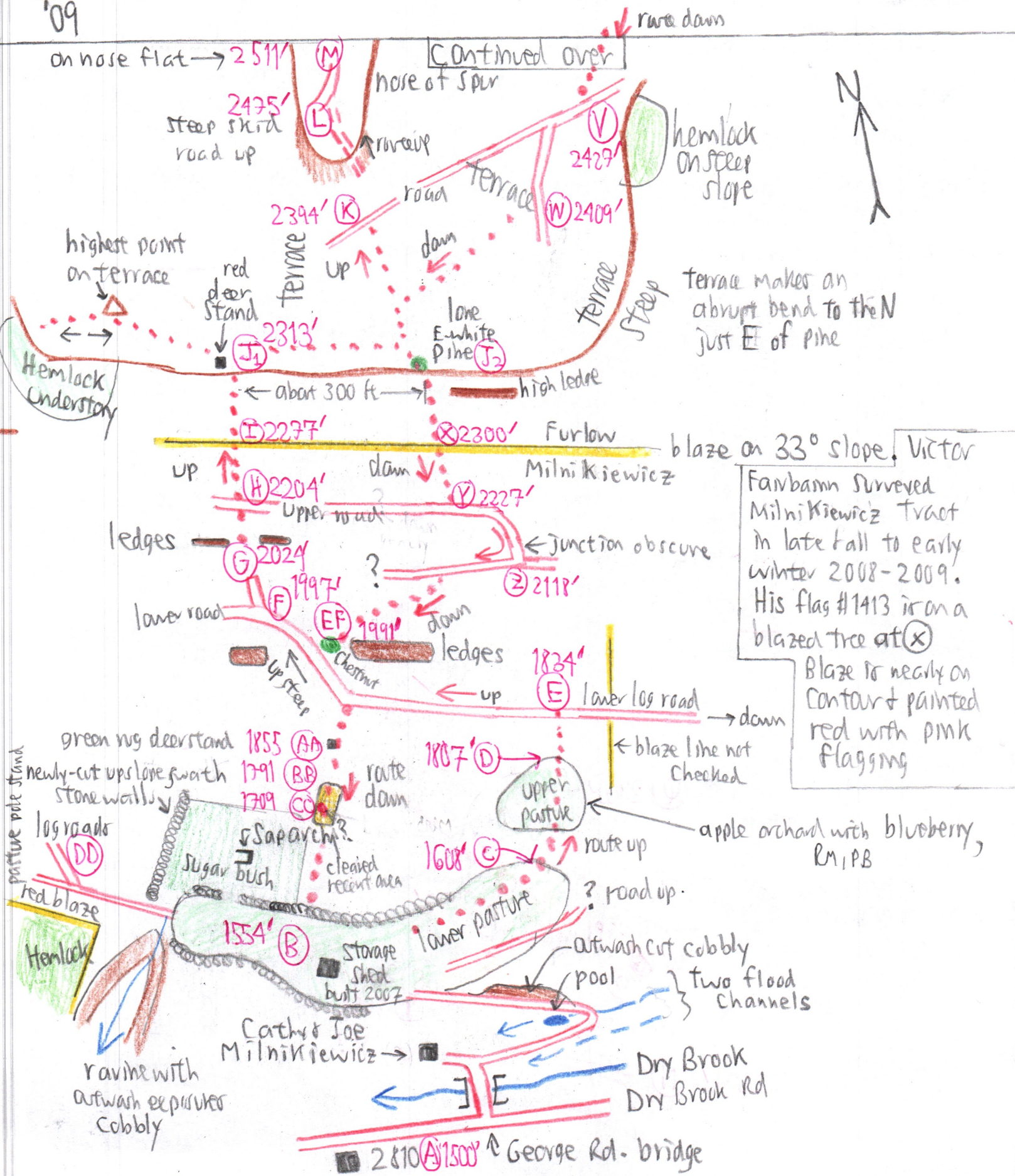
Ⓐ Oak stumps smaller on Furlow Land

Ⓒ Stumps older than on Milnikiewicz tract. No oak here. 30y estimate. Logged 1980? Prob. Yes.

4
19
'09

Fleischmann Mtn from the South (2810)

(200-20)



Forest Composition:

③ Sugarbush is a 2-age stand. Several old SUBS up to 33" dbh. surrounded by much younger trees*

④ pole stand on former pasture. No big SUBS.

* Look for charcoal in sap arch. None found within several inches of surface.

Hemlock on steep bank above Dry Brooklet again NW of ①.

Why limit HEM present on higher, non-acid cut lands?

At ①, ② as a common understory, replacing OAK, to 30' x 8" dbh.

More at ③. Below ④

The northwesterly of the 2 pines could not be seen because of hemlock density.

Red maple is the dominant tree on DBR's lower slopes. Hillsides are red from fls.

Two PMS in upper pasture ④ were of different colors: yellow = stamens manthensis
red = stamens past anthesis

Chestnut burs on road at 200-21

⑤ EF, placed under overhanging boulders on uphill roadside. Leaves at ⑥

At ⑤, wood piece collected from dead standing ^{snag} tree about 25' tall: Needed i.d.. Chestnut Ver Barkless, maybe 12" dbh?

Nearest chestnut is on Pakatakan Mtn. taking new NBR Trail above Hill Road.

⑥ HEM, OST, MO under DAK.

Charcoal collected, but only in small spot. Could be lightning fire or human?

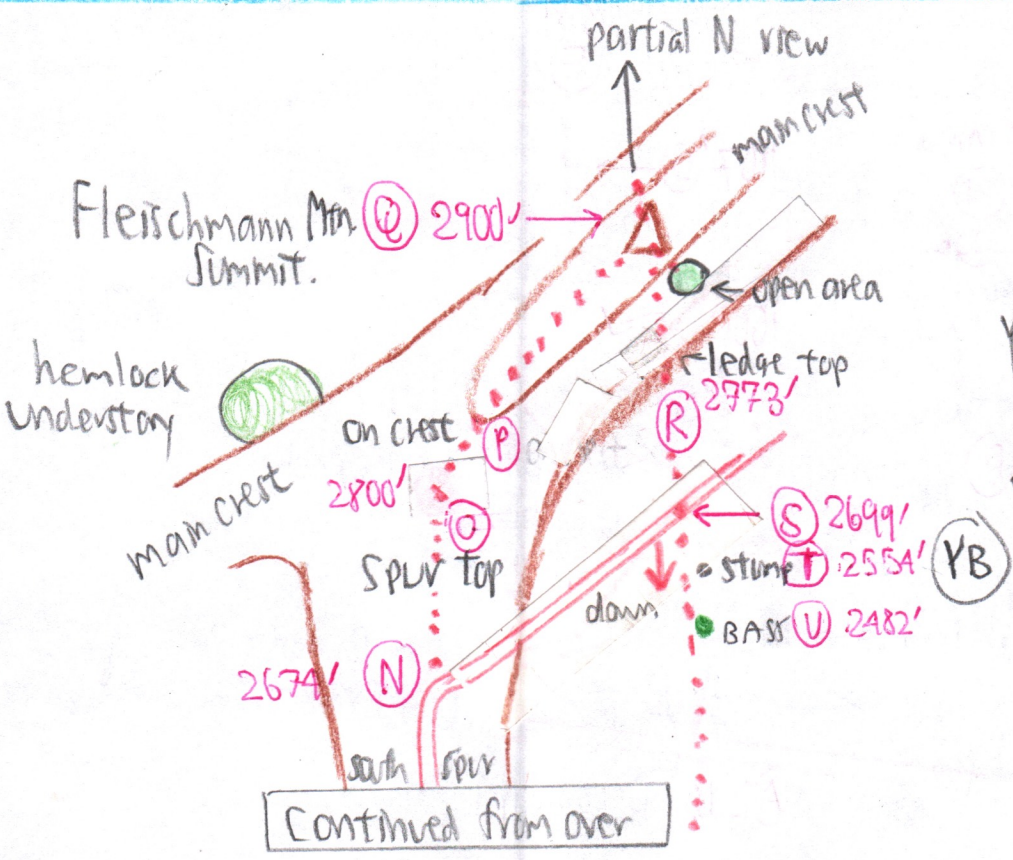
≠ Ch-lvs at a red silt 'cake.

Above ledge, but below ⑧:

More young beech.

⑦ 1st major terrace. Hem abun. under OST-B-RM-SUB-OAK-MO. B-RM dom.

(Continued on p. 200-22)



In bushwhacking down slope, keep Pakatakan Mtn. straight ahead & no compass will be needed.

Forest Composition, continued

Black birch at (F) with BC-RM-B.
Young hemlock beneath.
Also 1st seen at (Y) on descent.

Bigtooth & OAK dom at (I).
Bigtooth at (EF).

Oak common up to (I). 1st one
obs on descent at (W) stump.
Dominant at (X) at blaze.
BAO at (U) + (L).

Ice damage becomes noticeable ^{on ascent} betw.
(O) & (P) and, on descent, ends at (U).

primarily in area dominated by BC.
Ice storm of 4/15/07, probably.

Sugar maples, other than those at
Sugarbush near (B) deficient large, betw.
(O) & (P), to 28" ± dbh, deformed &
never logged.

ASH on descent begin at (R) ^{and (S)} where
BC dominance yields to SUB dom,
forest more open: less ice storm debris.
Black Cherry becomes common at (O).
On ascent, dominates the crest at (P)
& (Q) down to (R). Most < 16" on
summit & 40' to 50' tall. One 24" BC.

Summit 2900'

200-22

Fleischmann summit was never cleared
for acid wood industry. Climax forest twisted
persists with BC dom + SUB, B, MO, very few
PB, RM. 40 to 50' crowns. Very few
trees over 16" dbh except one 24" BC
just E of highest point. No pioneers.
Stumps are scattered, mostly 12" to 16"
in diameter, so that no large trees were
cut. Stumps of two age classes; about
30y & some 45y, much older than stumps
on Milnekevicz Tract below: (O) to (Q) to (R).

Open area about 200 ft in distance,
20 ft below & to south of summit could be
a wet spot, but no seep veg. was
present; except PB at edge & some RM.

See notes of 5/24/87, pp. 200-1-4.

No ledge exposed around summit
anywhere.

Acid Wood Cut? The oaks below & on
Terra (I) may be too old for a 1900-1915
acid wood cut set-off. Was there an earlier
near clear-cut(s)? Check more
stumps for ring counts ask Joe & Cathy
for exact year of recent cutting, ca-1990.

(H) AT (I) on upper log road, an old water
bottle with holes in it was found. Can be
dated? Black. Santa Fe
Springer, CA manufactured.
Brand name - California Springs A-C
recyclable #4, model #8.

Yes, 1991
Good
estimate!

Grand Cover

Lewcodyrum abun on dry Oak steep slope below J terrace.

Large Dicranum in open field below D, in full sun. Prob. a different species than Grand 2810.

Viola blanda (?) in flower between E & EE.

Claytonia in flower at K, but earlier on 4/17/09 on Murphy Hill. Abundant fl. at M. In flower at Q summit.

Carex communis spikes growing but not in anthesis yet at K.

Juncus communis in field below D.

Viola vit-m in flower at L under BASS + at S.

P. cili at M to N.

\$int on summit Q

Ery leaves appearing Q

Lyc. compl. at clav. at CC at pasture former top

R { PA at R
Hydro lvs.
Dicentra lvs.
Allium lvs.
Dentaria lvs.
Hepatica in fl. } in a small seep

Tussilago on a log road just below 20" 'cake nearby.

Views of Dry Brook Valley & Ridge

200-23

2810 ^{whole house} is not visible from anywhere on Fleischmann Mtn. because of dense tree cover, RM in flower, & sun angle reflecting off crowns. From only one spot, with monocular, was the roof barely discernible at BB with the Norway Spruce.

The upper stone wall, tall white pine & Jake's pasture with white truck are obvious from several places.

Negro Hollow = several homes are visible with Black Hollow Rd. at I.

Doubletop & Graham Mts visible from D + above. Graham > 3200' on E shoulder still snow.

Jake's house visible from J terrace because it's out in the open.

Dogs loud barking audible at I. continued ↓

Gray & Brown Bands on DBR: [2nd photo set]

These are visible from D and resemble the gray band below Penguin Rocks viewed from Dunraven on 4/17/09. Monocular explained horizontal bands pale Gray = terraces looking at tops of crowns.

dark Brown = pitches looking at sides of trunks.

See Belleayre NW end obs from Slade Road field notes on p. 204-7.

Wood from a 4ft high ^{hollow} stump collected at T, YB maybe 30y. BC? I.D. the wood.

A few black flies followed MK from J down to B

Hemlock groves clear on DBR, occurring on most of the spurs but not in the hollows, & > 2000'. RM dominant & in flower to about 2000' level.